

DRACON-ELTRON

Soldering & Cleaning Cleaning

Our Knowledge for you

ZESTRON
High Precision Cleaning

Your Global Center of Precision Cleaning Competence & Services

Cleaning agents for:

- Stencils and misprints
- PCB's
- Maintenance



Product overview

m.b. tech

Cleaning equipment for:

- Stencils and misprints
- PCB's
- Soldering pallets



N29SA2

QTEK

Keeping Technology Lines Moving

Cleaning material:

- Understencil cleaning rolls



Qtek Screen Cleaning Rolls

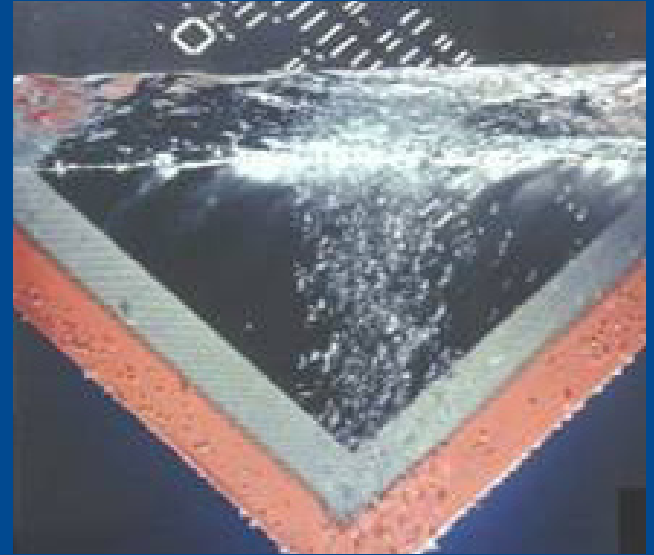
HumiSeal
Chase Specialty Coatings

Conformal coating

SCH Technologies

Conformal Coating Services, Equipment,
Technical Support & Humiseal Materials.

Conformal coating equipment



Cleaning agent

Beside soldering and cleaning solutions **Dracon-Eltron** offers 8 technology groups with product lines and services which make production and your product more reliable and more efficient. We offer you within these core areas an optimum of service.

- **Connection:** cable- en PCB connectors, cable assembly and hotmelt overmoulding.
- **Mechatronics:** servo-motors and servosystems, micromotors, transmissions, power supplies and special connectors.
- **Printing/Identification/Power:** POS, kiosk and thermal printer mechanisms, lcd, card readers, power supplies, PTC heaters and specials.
- **Soldering and cleaning:** usage material; solder material, cleaning towels and swaps, brushes and protection materials. PCB-services for cleaning and coating.
- **Plastics:** connection products, enclosures, cables, cable guides, shrink sleeves, PCB spacers.
- **Machines:** Machines for cable processing industry such as stripping, cutting, winding and overmoulding machines. PCB-production and rework such as cut and bending machines, soldering station, equipment for dispense and rework.
- **EMC/EMI:** We help to minimize the impact of electromagnetic interference. Depending on the application and the possibilities we thereby apply technique as filtering, grounding, shielding and absorption. One after the other sophisticated techniques which ask for an in-depth recommendation.
- **Tools and workstation:** We gladly advice you the correct tool and the optimum workshop institution for your production and application.

Our knowledge for you

Dracon-Eltron

- P.O. Box 5002 NL - 5004 EA Tilburg
Herastraat 51 NL - 5047 TX Tilburg (Locatienummer 1497)
T +31 (0) 13 578 0800 F +31 (0) 13 578 0950
info@dracon-eltron.com www.dracon-eltron.com

www.dracon-eltron.com

