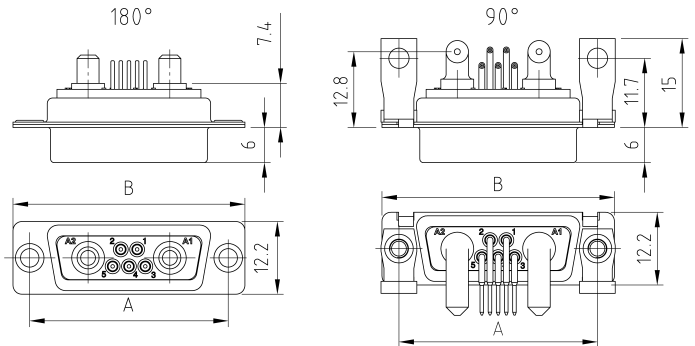
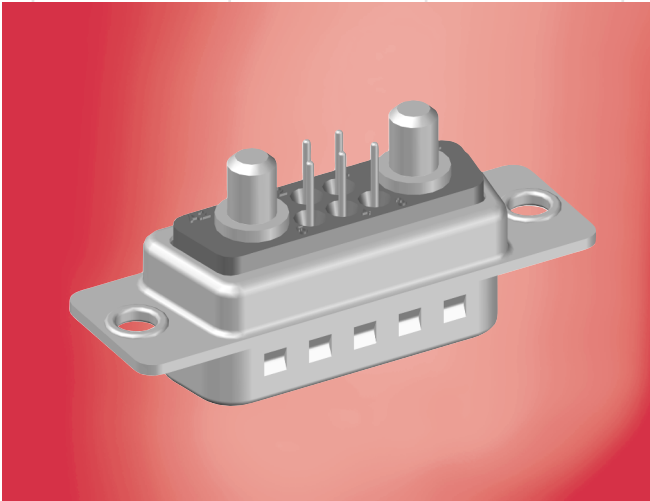


# MISCHPOLLEISTEN

mit Einlötanschluß

# MIXED LAYOUT

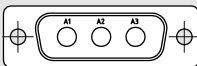
with dip solder contacts



XX=20/40 - Nennstrom in A  
XX=20/40 - Current in A

Polanordnung  
Arrangement

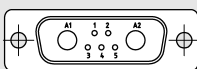
3W3



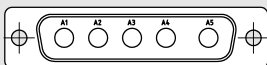
3W3C



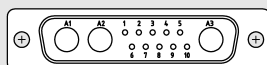
7W2



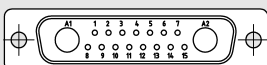
5W5



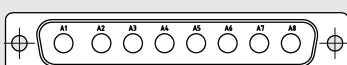
13W3



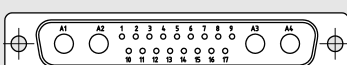
17W2



8W8



21W4



Artikel Nr. Artikel No.		Abmessungen, mm Dimensions, mm		Stift / Buchse Pin / Socket
180°	90°	A	B	
MSDT 3W3 P2-XX	MSDT 3W3 P648-XX	33,3	39,0	Stift (Pin)
MST 3W3 S2-XX	MST 3W3 S648-XX	33,3	39,0	Buchse (Socket)
MSDT 3W3 CP2-XX	MSDT 3W3 CP648-XX	33,3	39,0	Stift (Pin)
MST 3W3 CS2-XX	MST 3W3 CS648-XX	33,3	39,0	Buchse (Socket)
MSDT 7W2 P2-XX	MSDT 7W2 P648-XX	33,3	39,0	Stift (Pin)
MST 7W2 S2-XX	MST 7W2 S648-XX	33,3	39,0	Buchse (Socket)
MSDT 5W5 P2-XX	MSDT 5W5 P648-XX	47,0	52,8	Stift (Pin)
MST 5W5 S2-XX	MST 5W5 S648-XX	47,0	52,8	Buchse (Socket)
MSDT 13W3 P2-XX	MSDT 13W3 P648-XX	47,0	52,8	Stift (Pin)
MST 13W3 S2-XX	MST 13W3 S648-XX	47,0	52,8	Buchse (Socket)
MSDT 17W2 P2-XX	MSDT 17W2 P648-XX	47,0	52,8	Stift (Pin)
MST 17W2 S2-XX	MST 17W2 S648-XX	47,0	52,8	Buchse (Socket)
MSDT 8W8 P2-XX	MSDT 8W8 P648-XX	63,5	69,2	Stift (Pin)
MST 8W8 S2-XX	MST 8W8 S648-XX	63,5	69,2	Buchse (Socket)
MSDT 21W4 P2-XX	MSDT 21W4 P648-XX	63,5	69,2	Stift (Pin)
MST 21W4 S2-XX	MST 21W4 S648-XX	63,5	69,2	Buchse (Socket)